

## COUNCIL REDISTRICTING COMMISSION MINUTES

October 26, 2021

The Council Redistricting Commission of the City of Mesa met in the lower-level meeting room of the Council Chambers, 57 East 1st Street, on October 26, 2021, at 5:00 p.m.

COMMISSION PRESENT	COUNCIL PRESENT	STAFF PRESENT
Deanna Villanueva Saucedo, Chairperson Elaine Miner, Vice Chair Catherine Jiang Greg Marek Jo Martin	None	Dee Ann Mickelsen Jeffrey Robbins Sarah Staudinger

1. Call meeting to order.

Chairperson Villanueva-Saucedo called the meeting to order.

2. Hear a presentation, discuss and take action on City Council District Boundary map to recommend to the Mesa City Council.

Economic Development Project Manager Jeffrey Robbins stated during the map cleanup, there were some annexations throughout the city that were discovered which are represented on the map in green. He remarked the changes are mostly cosmetic, will not change the maximum deviations, and very slightly adjusts the population in a few districts. He pointed out the larger pieces located in District 6 are parcels zoned for manufacturing use, not residential, and will not affect the deviations. He mentioned the green lines on the map represent rights-of-way that are maintained by the City. He pointed out the green diamond shape area in District 1 did pick up some residents that were previously omitted. He advised taking action will bring the designated areas into the final proposed map for Council to review. **(See Attachment 1)**

Chairperson Villanueva-Saucedo remarked there are no substantial changes; however, the Commission wanted to remain transparent when approving the final map with the corrected information.

Mr. Robbins said if the Commission does have any questions about the changes, the packet provided highlights the revised map and population numbers. He remarked the first two pages

are the new revised complete map that matches the City of Mesa boundaries, and Pages 3 and 4 are the old maps for comparison. **(See Attachment 2)**

In response to a question from Commission Member Martin regarding the disclaimer on Attachment 1, Mr. Robbins commented the language is the standard disclaimer placed on GIS maps. He said the map portrayed is only for Commission use and will not be shared with Council. He indicated the final map presented to Council will have each district shown in a different color and will include street names.

Chairperson Villanueva-Saucedo thanked Mr. Robbins for the information.

It was moved by Commission Member Martin, seconded by Vice Chairperson Miner to accept the revised C5 map as the proposed map to be forwarded to the City Council.

Upon tabulation of votes, it showed:

AYES – Villanueva Saucedo-Miner-Jiang-Marek-Martin  
NAYS – None  
ABSENT – None

Carried unanimously.

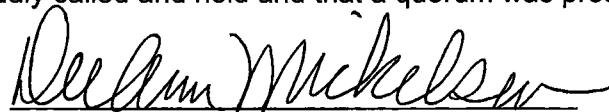
3. Items from citizens present.

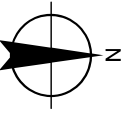
Maria Mancinas, Chairperson for the Washington-Escobedo Neighborhood Advisory Committee, indicated she is happy the Commission kept the Washington-Escobedo neighborhood within District 4.

4. Adjournment.

Without objection, the Council Redistricting Commission adjourned at 5:06 p.m.

I hereby certify that the foregoing minutes are a true and correct copy of the minutes of the Council Redistricting Commission of the City of Mesa, Arizona, held on the 26<sup>th</sup> day of October 2021. I further certify that the meeting was duly called and held and that a quorum was present.

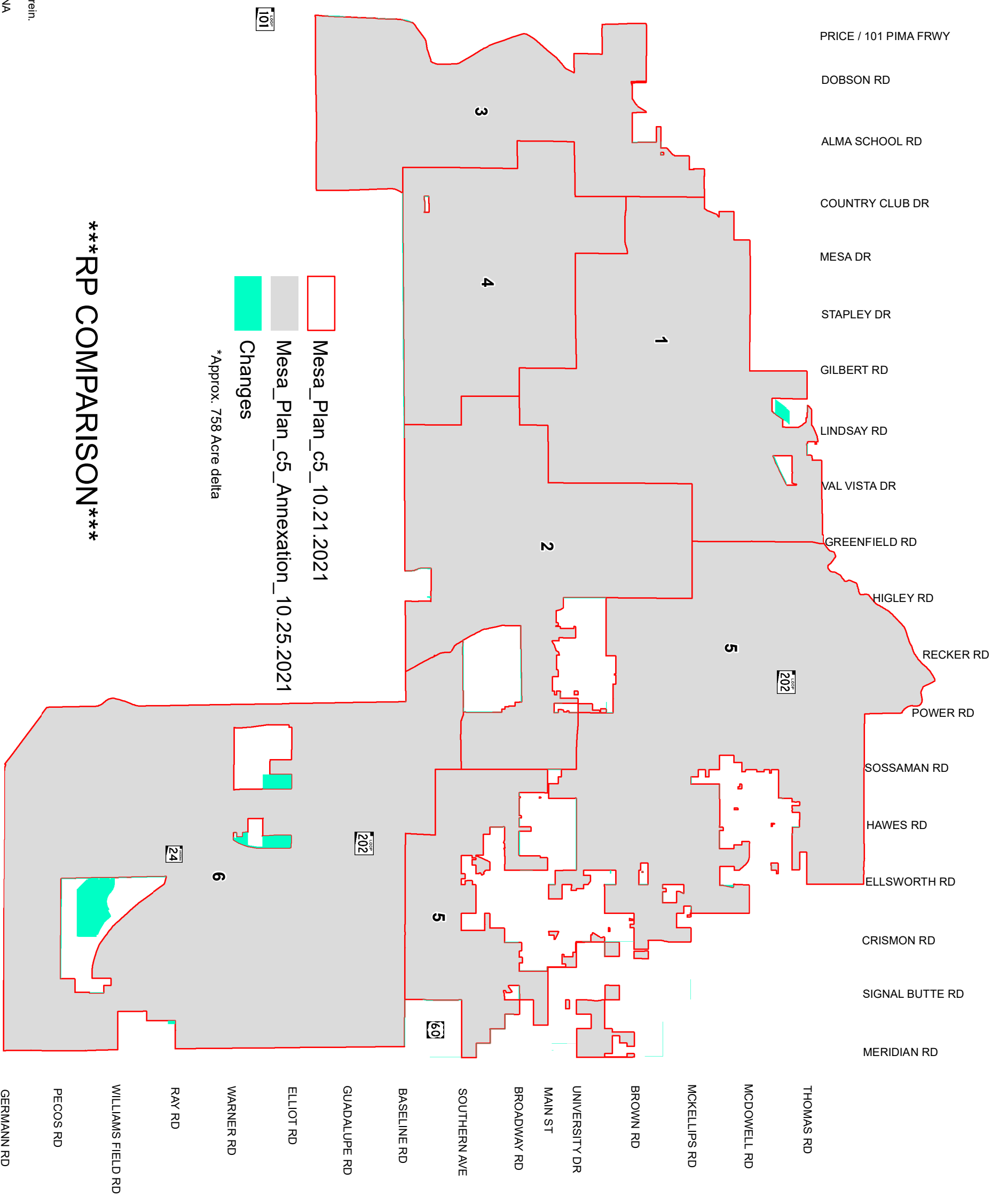
  
DEE ANN MICKELSEN, CITY CLERK



Map Created by: DoIT GIS  
Map Update Date: 10/26/2021

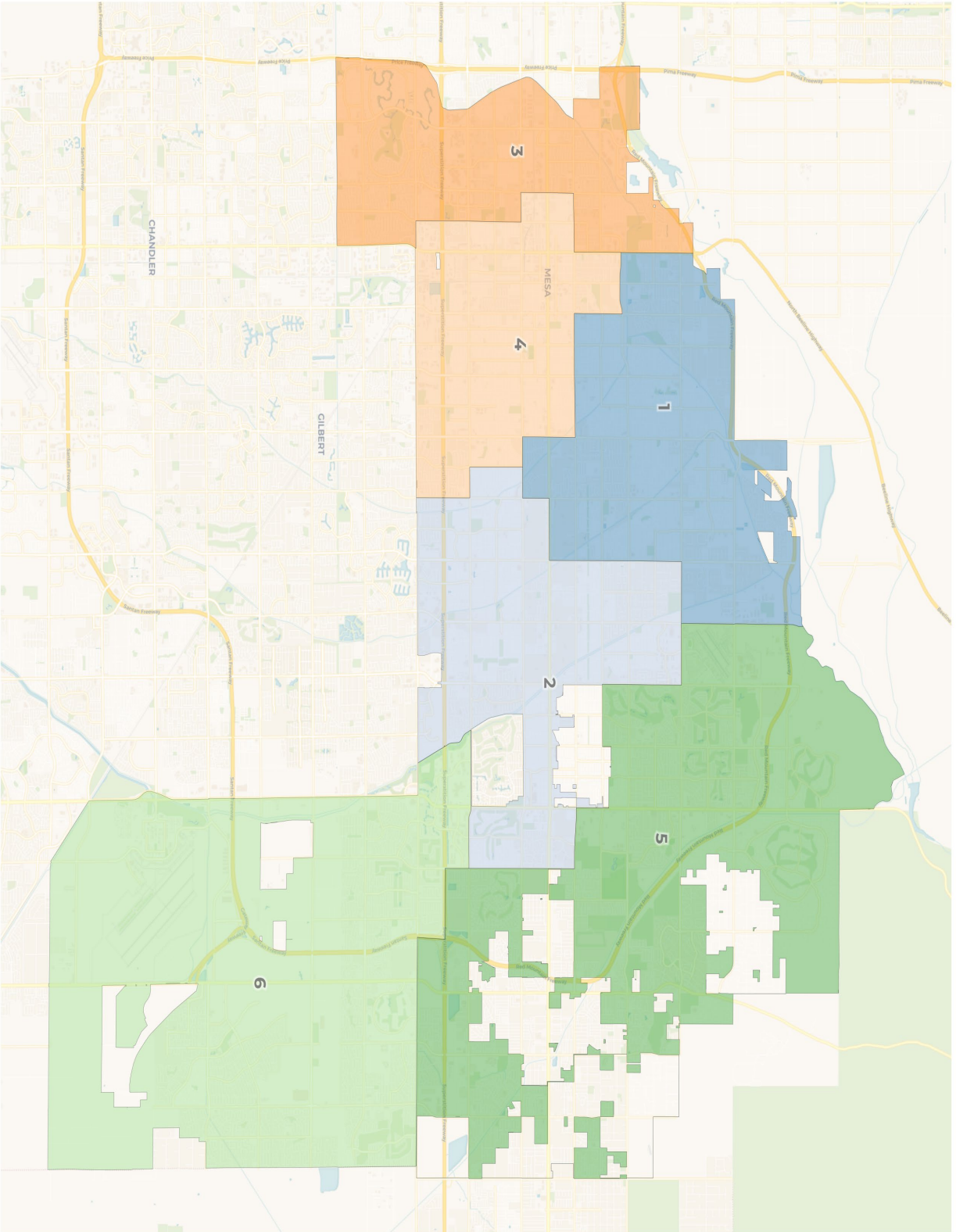
The City of Mesa makes no claims concerning the accuracy of this map nor assumes any liability resulting from the use of the information herein.

COPYRIGHT 1988, 2021 CITY OF MESA, ARIZONA



\*\*\*RP COMPARISON\*\*\*

Revised C5 – Total Deviation: 8.1%



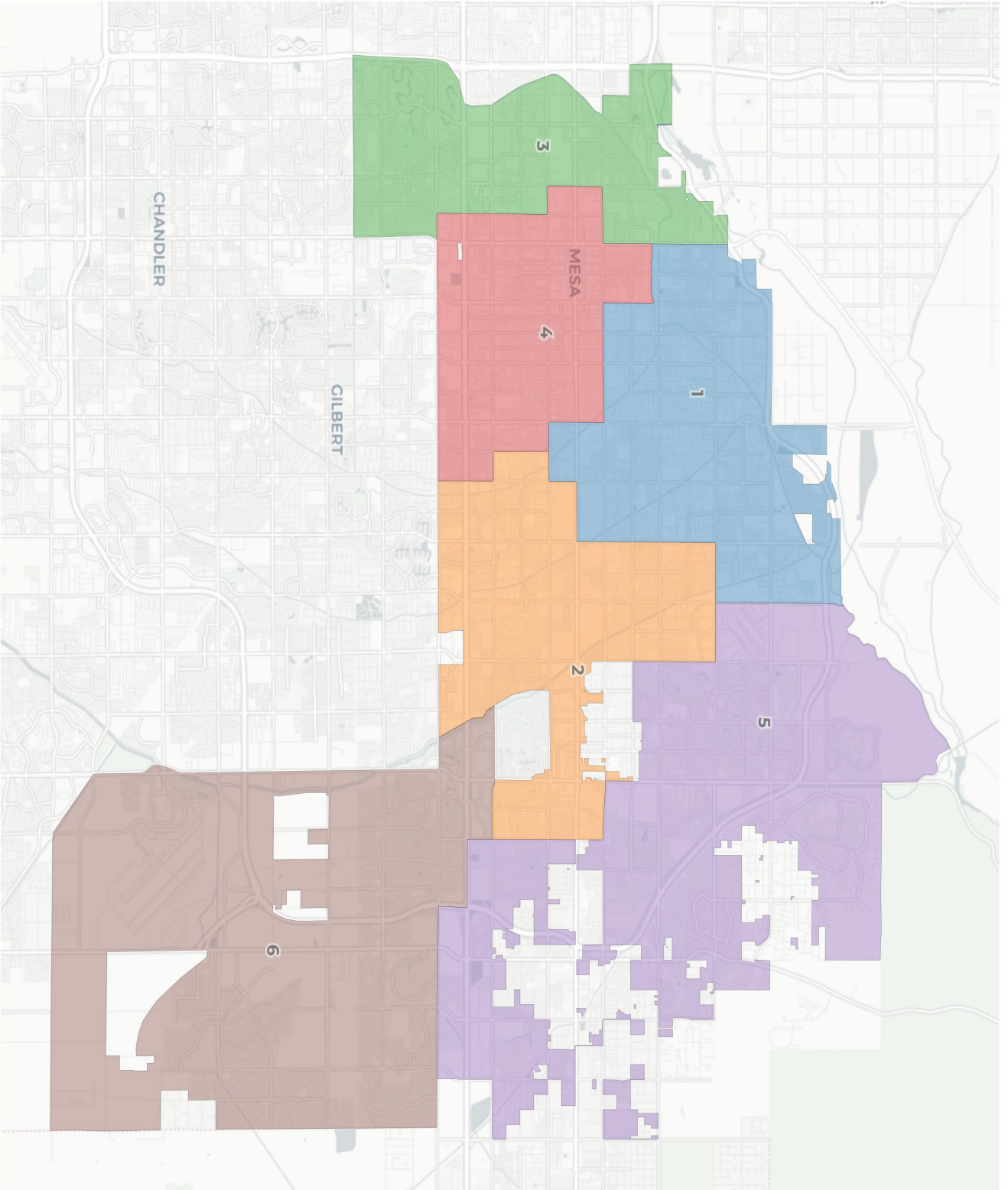


**Census**

	1	2	3	4	5	6
Population	81,657	82,745	84,024	85,670	88,461	81,907
Deviation	-2,420	-1,332	-53	1,593	4,394	-2,170
Deviation %	-2.9%	-1.6%	-0.1%	1.9%	5.2%	-2.6%
Other	55,346	61,295	49,578	35,017	71,421	61,734
Other %	67.8%	74.1%	59.0%	40.9%	80.7%	75.4%
Latino	21,822	16,529	25,887	45,620	13,226	14,442
Latino %	26.7%	20.0%	30.8%	53.3%	15.0%	17.6%
Asian	1,590	1,989	2,999	1,251	1,868	3,028
Asian %	1.9%	2.4%	3.6%	1.5%	2.1%	3.7%
Black	2,899	2,932	5,560	3,782	1,946	2,703
Black %	3.6%	3.5%	6.6%	4.4%	2.2%	3.3%

**Citizen Voting Age Population (CVAP)**

	1	2	3	4	5	6
Total CVAP	55,775	62,325	57,336	48,641	65,954	43,388
Other CVAP	43,385	50,935	40,126	28,224	57,095	35,582
Other CVAP %	77.8%	81.7%	70.0%	58.0%	86.6%	82.0%
Latino CVAP	9,117	8,550	12,500	17,549	6,977	5,906
Latino CVAP %	16.3%	13.7%	21.8%	36.1%	10.6%	13.6%
Asian CVAP	893	562	1,453	717	867	1,195
Asian CVAP %	1.6%	0.9%	2.5%	1.5%	1.3%	2.8%
Black CVAP	2,381	2,278	3,256	2,151	1,016	705
Black CVAP %	4.3%	3.7%	5.7%	4.4%	1.5%	1.6%





**Census**

	1	2	3	4	5	6
Population	81,494	82,712	84,024	85,829	88,351	81,907
Deviation	-2,559	-1,341	-29	1,776	4,298	-2,146
Deviation %	-3.0%	-1.6%	-0.0%	2.1%	5.1%	-2.6%
Other	55,270	61,266	49,578	35,089	71,322	61,734
Other %	67.8%	74.1%	59.0%	40.9%	80.7%	75.4%
Latino	21,761	16,525	25,887	45,681	13,215	14,442
Latino %	26.7%	20.0%	30.8%	53.2%	15.0%	17.6%
Asian	1,589	1,989	2,999	1,252	1,868	3,028
Asian %	1.9%	2.4%	3.6%	1.5%	2.1%	3.7%
Black	2,874	2,932	5,560	3,807	1,946	2,703
Black %	3.5%	3.5%	6.6%	4.4%	2.2%	3.3%

**Citizen Voting Age Population (CVAP)**

	1	2	3	4	5	6
Total CVAP	55,750	62,259	57,335	48,656	65,895	43,388
Other CVAP	43,368	50,875	40,126	28,233	57,046	35,582
Other CVAP %	77.8%	81.7%	70.0%	58.0%	86.6%	82.0%
Latino CVAP	9,113	8,546	12,500	17,551	6,966	5,906
Latino CVAP %	16.3%	13.7%	21.8%	36.1%	10.6%	13.6%
Asian CVAP	892	560	1,453	717	867	1,195
Asian CVAP %	1.6%	0.9%	2.5%	1.5%	1.3%	2.8%
Black CVAP	2,377	2,278	3,256	2,155	1,015	705
Black CVAP %	4.3%	3.7%	5.7%	4.4%	1.5%	1.6%